

"The Bewitching Bow" Series
for Staffordshire Music Service



"Sing and Play Along"



instrumentalists join singers in the National Curriculum

FLUTE

Kerry Milan

Water Come a Me Eye

Two staves of musical notation in G major (one sharp) and 4/4 time. The first staff contains the first line of the melody, and the second staff contains the second line. The melody consists of eighth and quarter notes, ending with a quarter rest.

For the Chorus of The Keeper, one group may play the notes with the tails going up, the other group those with the tails going down.

The Keeper

Four staves of musical notation in G major (one sharp) and 4/4 time. The first staff is the beginning of the piece. The second staff is labeled 'Chorus' and contains a sequence of notes with stems pointing up and down. The third and fourth staves continue the melody with various rhythmic patterns.

Lewis Bridal Song



Three staves of musical notation in G major (one sharp) and 4/4 time. The first staff is labeled 'Chorus' and features a rhythmic pattern of eighth notes. The second staff is labeled 'Verse' and 'Fine' and continues the melody. The third staff ends with the instruction 'D.C.' (Da Capo).

Turn the Glasses Over



Musical notation for 'Turn the Glasses Over' in G major, 4/4 time. The piece consists of three staves of music.

The Riddle Song: I Gave my Love a Cherry

Musical notation for 'The Riddle Song: I Gave my Love a Cherry' in G major, 4/4 time. The piece consists of two staves of music.

Zum Gali Gali

Musical notation for 'Zum Gali Gali' in G major, 4/4 time. The piece consists of three staves of music. The third staff is labeled 'Chorus' and ends with a double bar line and a fermata.

The chorus of Zum Gali Gali can be played as an introduction and then throughout the piece as a second part.

Coulter's Candy

Musical notation for 'Coulter's Candy' in G major (one sharp) and 4/4 time. It consists of two staves of music. The first staff contains the first two measures, and the second staff contains the next two measures, ending with a double bar line.

The British Grenadiers

Musical notation for 'The British Grenadiers' in G major (one sharp) and 4/4 time. It consists of three staves of music. The first staff contains the first two measures, the second staff contains the next two measures, and the third staff contains the final two measures, ending with a double bar line.

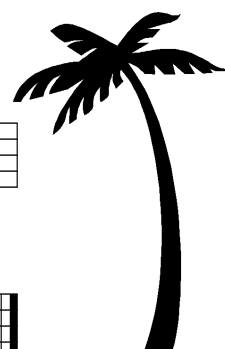
Mango Walk

Chorus

Musical notation for the 'Chorus' of 'Mango Walk' in G major (one sharp) and 4/4 time. It consists of two staves of music. The first staff contains the first two measures, and the second staff contains the next two measures, ending with a double bar line.

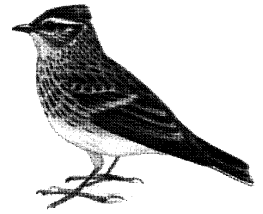
Verse

Musical notation for the 'Verse' of 'Mango Walk' in G major (one sharp) and 4/4 time. It consists of two staves of music. The first staff contains the first two measures, and the second staff contains the next two measures, ending with a double bar line.



Mango Walk may be performed in two parts, one starting with the chorus, the other at line three with the verse.

Alouette (the Lark)



Musical score for 'Alouette (the Lark)' consisting of three staves of music in G major and 4/4 time. The first staff begins with a treble clef, a key signature of one sharp (F#), and a 4/4 time signature. The melody is characterized by eighth and sixteenth notes, often beamed together. The second staff continues the melody with some rests and a repeat sign. The third staff concludes the piece with a final cadence.

Land of the Silver Birch

Musical score for 'Land of the Silver Birch' consisting of three staves of music in G major and 4/4 time. The first staff starts with a treble clef, a key signature of one sharp (F#), and a 4/4 time signature. The melody is composed of eighth and quarter notes. The second staff continues the melody with some rests. The third staff features a more rhythmic pattern with eighth notes and ends with a final cadence.

Amazing Grace

Musical score for 'Amazing Grace' consisting of three staves of music in B-flat major and 3/4 time. The first staff begins with a treble clef, a key signature of two flats (Bb and Eb), and a 3/4 time signature. The melody features a prominent triplet of eighth notes. The second staff continues the melody with a long note and another triplet. The third staff concludes the piece with a final cadence.

My Grandfather's Clock

Musical score for 'My Grandfather's Clock' in G major, 4/4 time. The score consists of four staves of music. The first staff begins with a treble clef, a key signature of one sharp (F#), and a 4/4 time signature. It features a series of eighth notes and quarter notes, with first and second endings marked '1.' and '2.'. The second staff continues the melody with eighth notes and quarter notes. The third staff includes a triplet of eighth notes marked '3'. The fourth staff concludes the piece with a final cadence.



Ye Banks and Braes

A Traditional Scottish Tune

Musical score for 'Ye Banks and Braes' in G major, 6/8 time. The score consists of three staves. The first staff starts with a treble clef, a key signature of one sharp (F#), and a 6/8 time signature, followed by a repeat sign. The second staff has first and second endings marked '1' and '2 and 3', ending with the word 'Fine'. The third staff continues the melody and ends with the instruction 'D.S. al Fine'.

The Ash Grove

A Traditional Welsh Tune

Musical score for 'The Ash Grove' in G major, 3/4 time. The score consists of three staves. The first staff starts with a treble clef, a key signature of one sharp (F#), and a 3/4 time signature, followed by a repeat sign. The second staff has first and second endings marked '1' and '2 and 3', ending with the word 'Fine'. The third staff continues the melody and ends with the instruction 'D.S. al Fine'.

The Cuckoo

page 7
An Austrian folk-song



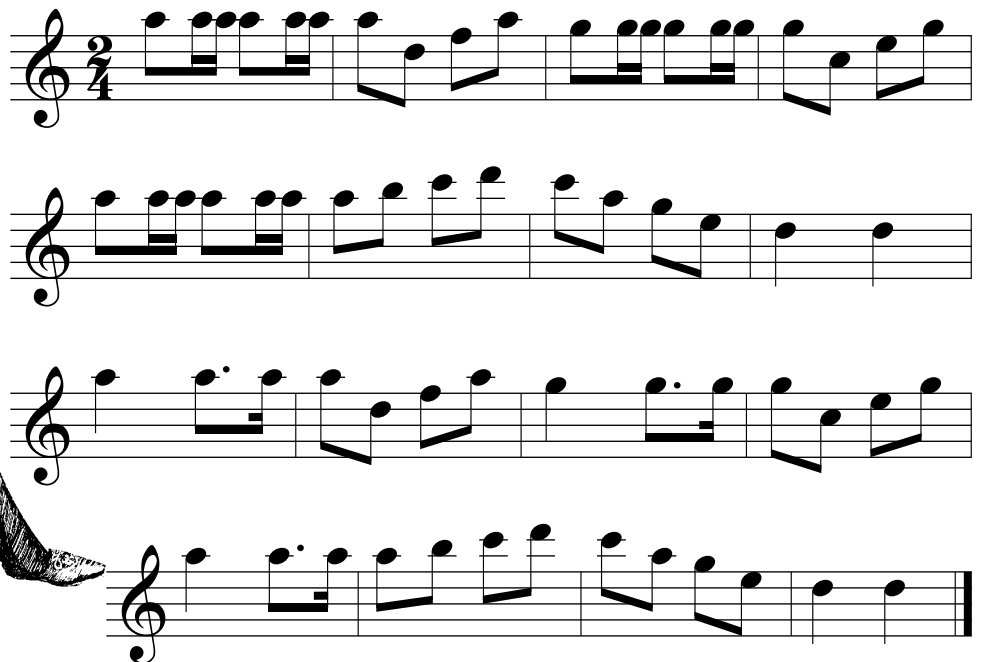
- a good three-part round

Baby Sardine

Music by P. Wooding / J. Wild

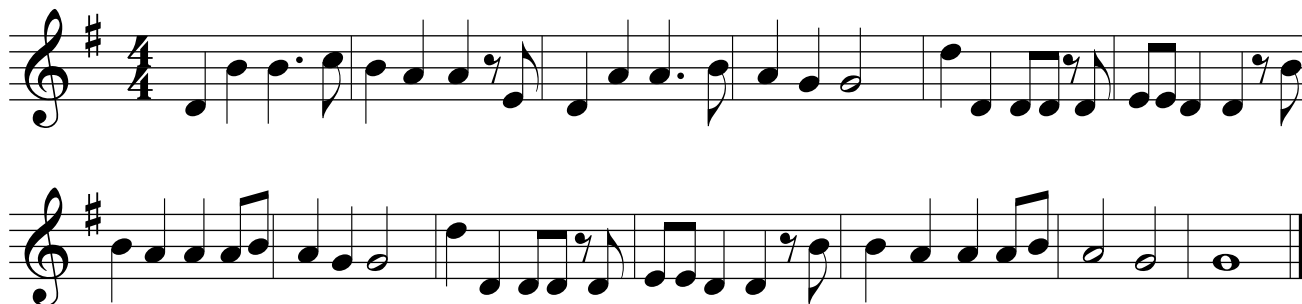


What Shall We Do with the Drunken Sailor?



My Aunt Jane

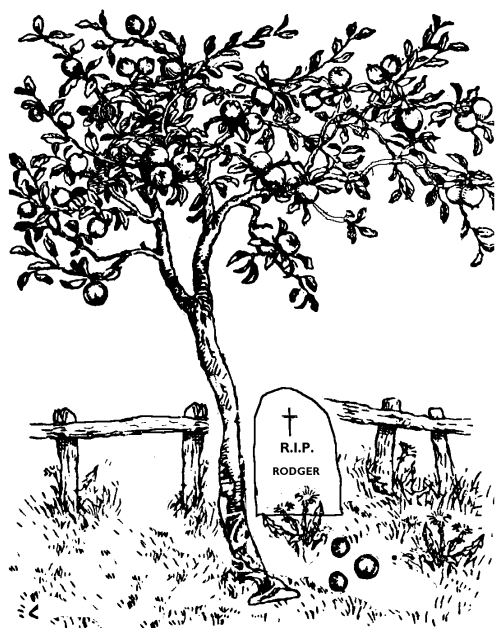
- A Traditional Irish Tune



All Night, All Day



Old Rodger is Dead



Soldier, Soldier, Won't You Marry Me?

page 9



Musical notation for the song "Soldier, Soldier, Won't You Marry Me?". It consists of four staves of music in a single system, all in treble clef and one flat (B-flat) key signature. The first staff ends with a double bar line and a repeat sign. The second staff ends with a double bar line and the word "Fine". The third staff ends with a double bar line and a repeat sign. The fourth staff ends with a double bar line and the instruction "D.C. al Fine".

Andulko (Little Angel)

A Czech folk-song

Musical notation for the song "Andulko (Little Angel)". It consists of three staves of music in a single system, all in treble clef and 3/4 time signature. The first staff ends with a double bar line and a repeat sign. The second and third staves continue the melody.

Paul's Little Hen

A Scandinavian folk-song

Musical notation for the song "Paul's Little Hen". It consists of three staves of music in a single system, all in treble clef and 2/4 time signature. The first staff ends with a double bar line and a repeat sign. The second and third staves continue the melody.

The Soldier's Song - Schumann

R. Schumann

Musical score for 'The Soldier's Song' by Robert Schumann, consisting of four staves of music in 4/4 time. The melody is written in treble clef with a key signature of one sharp (F#). The music features a mix of eighth and sixteenth notes, with some rests and a final cadence.

Silent Worship

G. F. Handel

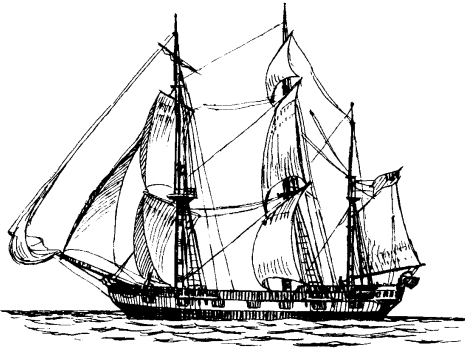
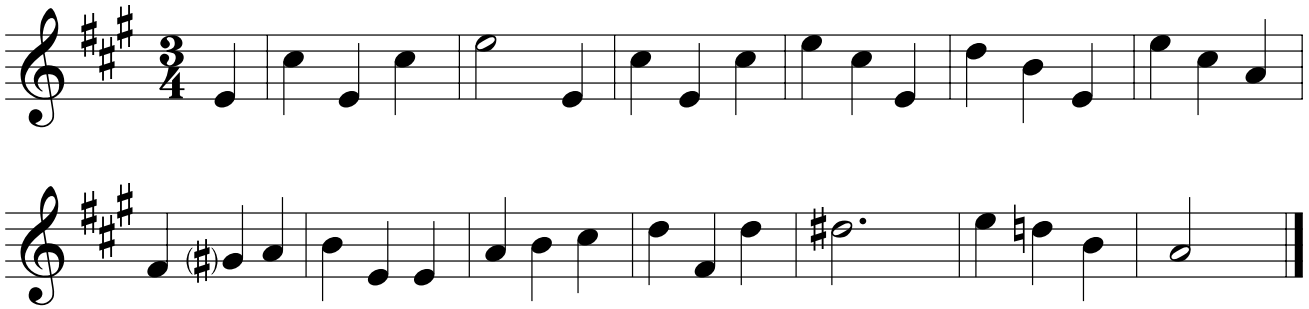
Musical score for 'Silent Worship' by George Frideric Handel, consisting of four staves of music in 4/4 time. The melody is written in treble clef with a key signature of one sharp (F#). The music features a mix of eighth and sixteenth notes, with some rests and a final cadence. The word 'Fine' is written above the third staff, and 'D.C. al Fine' is written below the fourth staff.



The Blacksmith - Brahms

page 11

J. Brahms



Blow the Wind Southerly



Acknowledgements

The words of ANDULKO THE GOOSE GIRL by Kerry Milan with acknowledgements to Roger Fiske.

The words of BABY SARDINE by Kerry Milan with acknowledgements to Spike Milligan.

The music for BABY SARDINE by P. Wooding and J. Wild: © Sing for Pleasure, 25 Fryerning Lane, Ingatestone, Essex. CM4 0DD

The percussion / piano accompaniments are by Kerry Milan, except Handel's "Silent Worship" and Schumann's "The Soldier's Song". The accompaniment to Brahms' "The Blacksmith" is a simplified arrangement of the original piano part. (A still easier version appears in the Oxford School Music Books.)

If other people's copyright has inadvertently been infringed credit will be given in any further publication.

Contents

2	Water Come a Me Eye
2	Lewis Bridal Song
2	The Keeper
3	The Riddle Song: I Gave my Love a Cherry
3	Zum Gali Gali
3	Turn the Glasses Over
4	Coulter's Candy
4	The British Grenadiers
4	Mango Walk
5	Alouette (the Lark)
5	Land of the Silver Birch
5	Amazing Grace
6	My Grandfather's Clock
6	Ye Banks and Braes
6	The Ash Grove
7	The Cuckoo
7	Baby Sardine
7	What Shall We Do with the Drunken Sailor?
8	My Aunt Jane
8	All Night, All Day
8	Old Rodger is Dead
9	Soldier, Soldier, Won't You Marry Me?
9	Andulko (Little Angel)
9	Paul's Little Hen
10	The Soldier's Song - Schumann
10	Silent Worship
11	The Blacksmith - Brahms
11	Blow the Wind Southerly
11	Acknowledgements