

"The Bewitching Bow" Series
for Staffordshire Music Service



"Sing and Play Along"



instrumentalists join singers in the National Curriculum

B \flat CLARINET

Kerry Milan

Water Come a Me Eye

Two staves of musical notation in G major (one sharp) and 4/4 time. The first staff contains a melody of eighth and quarter notes. The second staff contains a bass line of eighth and quarter notes.

For the Chorus of The Keeper, one group may play the notes with the tails going up, the other group those with the tails going down.

The Keeper

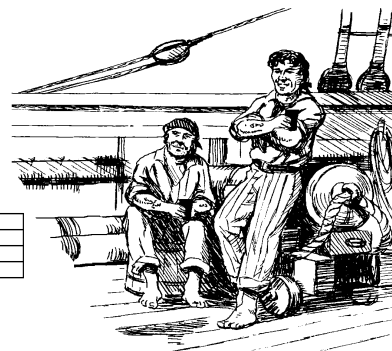
Four staves of musical notation in G major (one sharp) and 4/4 time. The first staff is the melody. The second staff is labeled 'Chorus' and features a specific rhythmic pattern. The third and fourth staves provide accompaniment.

Lewis Bridal Song



Three staves of musical notation in G major (one sharp) and 4/4 time. The first staff is labeled 'Chorus'. The second staff is labeled 'Fine Verse'. The third staff ends with the instruction 'D.C.' (Da Capo).

Turn the Glasses Over



Musical score for "Turn the Glasses Over" in 4/4 time, key of D major (two sharps). The score consists of three staves of music.

The Riddle Song: I Gave my Love a Cherry

Musical score for "The Riddle Song: I Gave my Love a Cherry" in 4/4 time, key of D major (two sharps). The score consists of two staves of music.

Zum Gali Gali

Musical score for "Zum Gali Gali" in 4/4 time, key of D major (two sharps). The score consists of three staves of music. The third staff is labeled "Chorus".

The chorus of Zum Gali Gali can be played as an introduction and then throughout the piece as a second part.

Coulter's Candy

Musical notation for 'Coulter's Candy' in G major (one sharp) and 4/4 time. It consists of two staves of music. The first staff begins with a treble clef, a key signature of one sharp (F#), and a 4/4 time signature. The melody is composed of eighth and quarter notes.

The British Grenadiers

Musical notation for 'The British Grenadiers' in G major (one sharp) and 4/4 time. It consists of three staves of music. The first staff begins with a treble clef, a key signature of one sharp (F#), and a 4/4 time signature. The melody is composed of eighth and quarter notes.

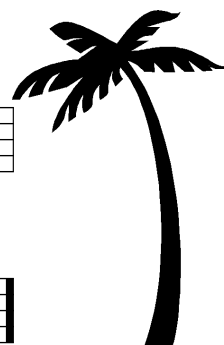
Mango Walk

Chorus

Musical notation for the Chorus of 'Mango Walk' in G major (one sharp) and 4/4 time. It consists of two staves of music. The first staff begins with a treble clef, a key signature of one sharp (F#), and a 4/4 time signature. The melody is composed of eighth and quarter notes.

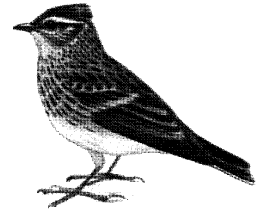
Verse

Musical notation for the Verse of 'Mango Walk' in G major (one sharp) and 4/4 time. It consists of two staves of music. The first staff begins with a treble clef, a key signature of one sharp (F#), and a 4/4 time signature. The melody is composed of eighth and quarter notes.



Mango Walk may be performed in two parts, one starting with the chorus, the other at line three with the verse.

Alouette (the Lark)



Musical score for 'Alouette (the Lark)'. It consists of three staves of music in treble clef, with a key signature of three sharps (F#, C#, G#) and a 4/4 time signature. The melody is characterized by a series of eighth and sixteenth notes, often beamed together, with some rests. The accompaniment features a steady eighth-note pattern in the lower register.

Land of the Silver Birch

Musical score for 'Land of the Silver Birch'. It consists of three staves of music in treble clef, with a key signature of three sharps (F#, C#, G#) and a 4/4 time signature. The melody is composed of eighth and sixteenth notes, often beamed together. The accompaniment consists of a consistent eighth-note pattern.

Amazing Grace

Musical score for 'Amazing Grace'. It consists of three staves of music in treble clef, with a key signature of one sharp (F#) and a 3/4 time signature. The melody features a prominent triplet of eighth notes in the first and third measures of each staff. The accompaniment includes a mix of quarter and eighth notes, with some longer note values.

My Grandfather's Clock

Musical score for 'My Grandfather's Clock' in G major (one sharp) and 4/4 time. The score consists of four staves. The first staff has a repeat sign followed by two first endings labeled '1' and '2'. The second staff continues the melody. The third staff features a triplet of eighth notes. The fourth staff also features a triplet of eighth notes and concludes the piece.



Ye Banks and Braes

A Traditional Scottish Tune

Musical score for 'Ye Banks and Braes' in G major (one sharp) and 6/8 time. The score consists of three staves. The first staff begins with a repeat sign and a double bar line. The second staff has a first ending labeled '1' and a second ending labeled '2 and 3' with the word 'Fine' written above it. The third staff concludes the piece with the instruction 'D.S. al Fine'.

The Ash Grove

A Traditional Welsh Tune

Musical score for 'The Ash Grove' in G major (one sharp) and 3/4 time. The score consists of three staves. The first staff begins with a repeat sign and a double bar line. The second staff has a first ending labeled '1' and a second ending labeled '2 and 3' with the word 'Fine' written above it. The third staff concludes the piece with the instruction 'D.S. al Fine'.

The Cuckoo

An Austrian folk-song page 7

Musical score for 'The Cuckoo' in G major (one sharp) and 4/4 time. It consists of three staves. The first two staves are the main melody. The third staff is a three-part round with two endings, labeled '1' and '2'.

- a good three-part round

Baby Sardine

Music by P. Wooding / J. Wild

Musical score for 'Baby Sardine' in G major (one sharp) and 4/4 time. It consists of three staves labeled A, B, and C, representing the three parts of a round.

What Shall We Do with the Drunken Sailor?



Musical score for 'What Shall We Do with the Drunken Sailor?' in G major (one sharp) and 2/4 time. It consists of four staves of music.

My Aunt Jane

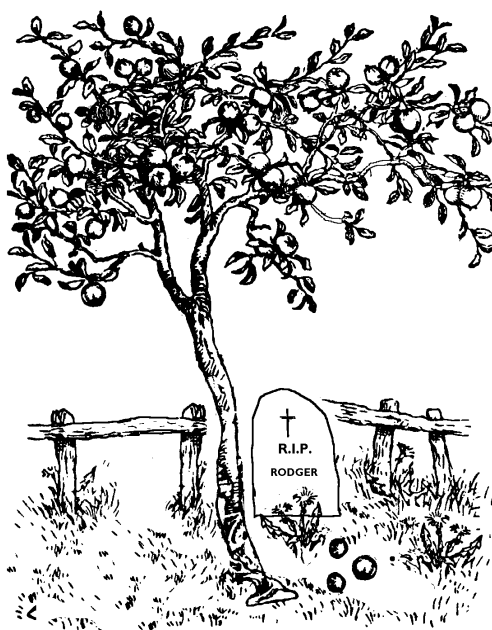
- A Traditional Irish Tune

Two staves of musical notation for the tune 'My Aunt Jane'. The key signature is three sharps (F#, C#, G#) and the time signature is 4/4. The melody is written on a treble clef staff. The first staff contains the first two lines of the melody, and the second staff contains the next two lines, ending with a double bar line.

All Night, All Day

Four staves of musical notation for the tune 'All Night, All Day'. The key signature is three sharps (F#, C#, G#) and the time signature is 2/4. The melody is written on a treble clef staff. The first staff contains the first two lines of the melody, ending with a 'Fine' marking. The second staff contains the next two lines. The third and fourth staves contain the final two lines of the melody, ending with a 'D.C. al Fine' marking.

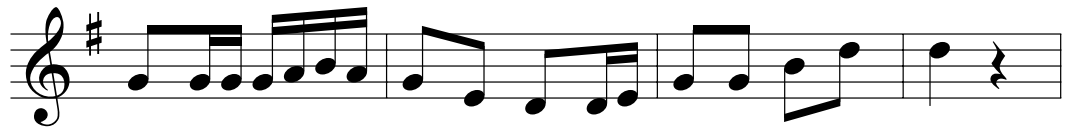
Old Rodger is Dead



Four staves of musical notation for the tune 'Old Rodger is Dead'. The key signature is three sharps (F#, C#, G#) and the time signature is 6/8. The melody is written on a treble clef staff. The first two staves contain the first two lines of the melody. Between the second and third staves is the text '- or -'. The third and fourth staves contain the final two lines of the melody.

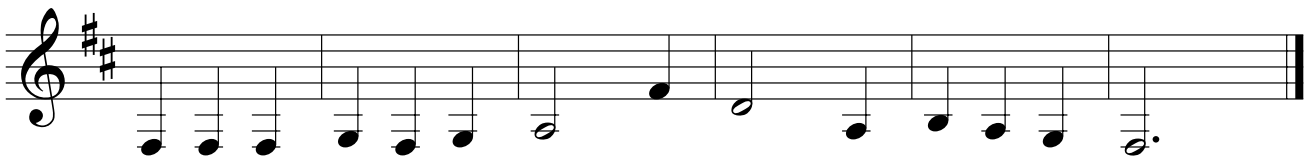
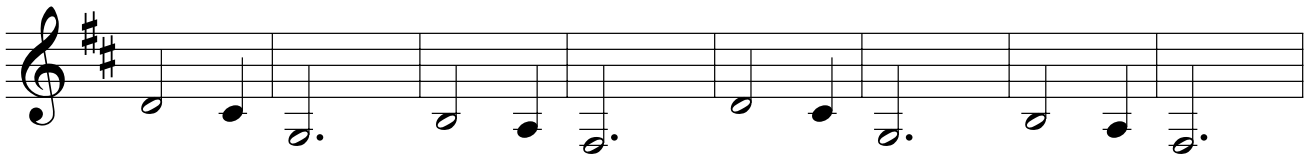
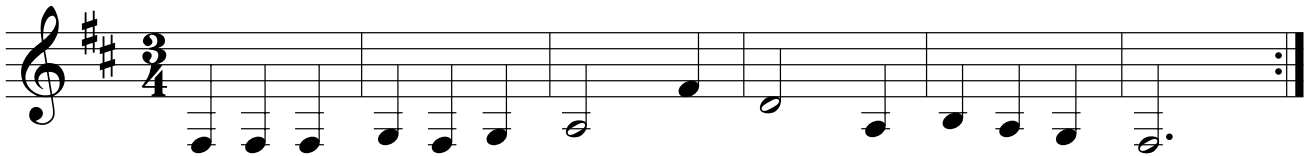
Soldier, Soldier, Won't You Marry Me?

page 9



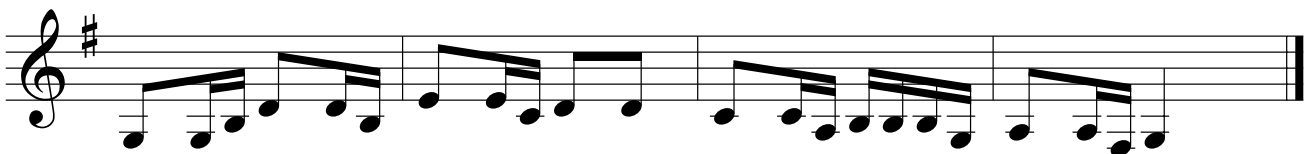
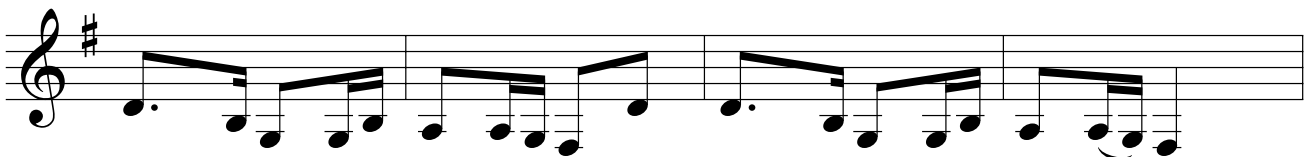
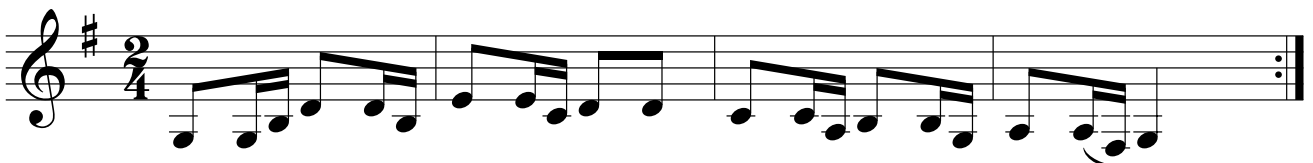
Andulko (Little Angel)

A Czech folk-song



Paul's Little Hen

A Scandinavian folk-song



The Soldier's Song - Schumann

R. Schumann

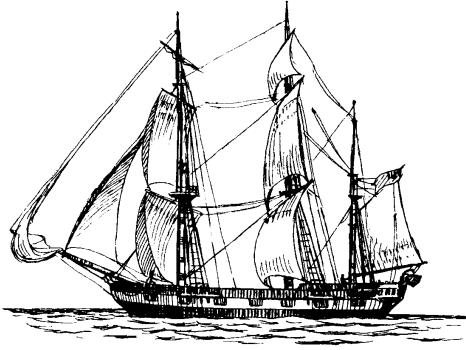
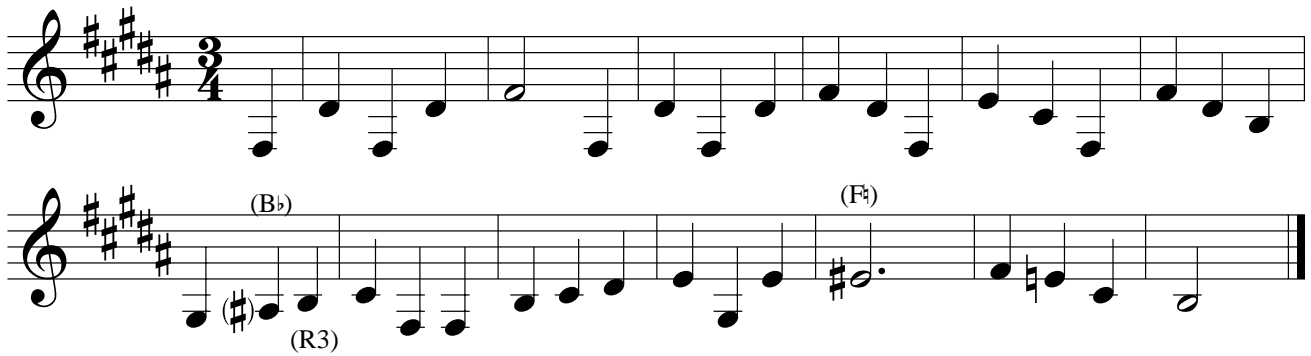
Musical score for 'The Soldier's Song' by Robert Schumann. The score consists of four staves of music in G major (one sharp) and 4/4 time. The melody is characterized by a steady eighth-note pattern with occasional dotted rhythms and rests.

Silent Worship

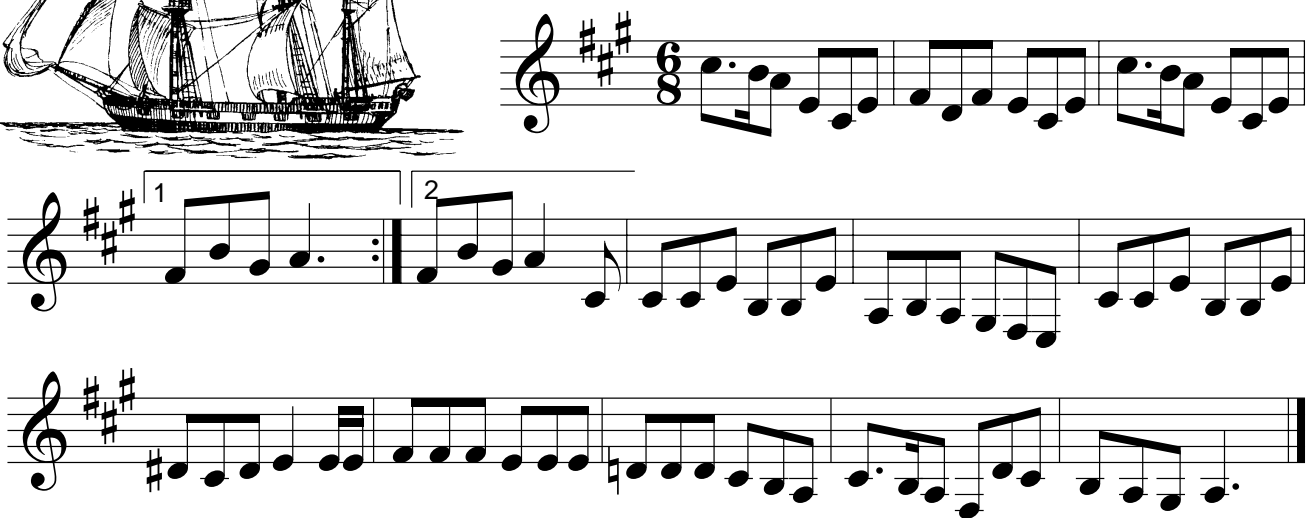
G. F. Handel

Musical score for 'Silent Worship' by George Frideric Handel. The score consists of four staves of music in G major (one sharp) and 4/4 time. The melody features a prominent eighth-note pattern. The word 'Fine' is written above the third staff, and 'D.C. al Fine' is written below the fourth staff.





Blow the Wind Southerly



Acknowledgements

The words of ANDULKO THE GOOSE GIRL by Kerry Milan with acknowledgements to Roger Fiske.

The words of BABY SARDINE by Kerry Milan with acknowledgements to Spike Milligan.

The music for BABY SARDINE by P. Wooding and J. Wild: © Sing for Pleasure, 25 Fryerning Lane, Ingatestone, Essex. CM4 0DD

The percussion / piano accompaniments are by Kerry Milan, except Handel's "Silent Worship" and Schumann's "The Soldier's Song". The accompaniment to Brahms' "The Blacksmith" is a simplified arrangement of the original piano part. (A still easier version appears in the Oxford School Music Books.)

If other people's copyright has inadvertently been infringed credit will be given in any further publication.

Contents

2	Water Come a Me Eye
2	Lewis Bridal Song
2	The Keeper
3	The Riddle Song: I Gave my Love a Cherry
3	Zum Gali Gali
3	Turn the Glasses Over
4	Coulter's Candy
4	The British Grenadiers
4	Mango Walk
5	Alouette (the Lark)
5	Land of the Silver Birch
5	Amazing Grace
6	My Grandfather's Clock
6	Ye Banks and Braes
6	The Ash Grove
7	The Cuckoo
7	Baby Sardine
7	What Shall We Do with the Drunken Sailor?
8	My Aunt Jane
8	All Night, All Day
8	Old Rodger is Dead
9	Soldier, Soldier, Won't You Marry Me?
9	Andulko (Little Angel)
9	Paul's Little Hen
10	The Soldier's Song - Schumann
10	Silent Worship
11	The Blacksmith - Brahms
11	Blow the Wind Southerly
11	Acknowledgements