

"The Bewitching Bow" Series
for Staffordshire Music Service



"Sing and Play Along"



instrumentalists join singers in the National Curriculum

ALTO SAXOPHONE

Kerry Milan

Water Come a Me Eye

Two staves of musical notation in G major (one sharp) and 4/4 time. The first staff begins with a treble clef, a key signature of one sharp (F#), and a 4/4 time signature. The melody consists of eighth and quarter notes, with a final half note and a quarter rest. The second staff continues the melody with similar rhythmic patterns, ending with a half note and a quarter rest.

For the Chorus of The Keeper, one group may play the notes with the tails going up, the other group those with the tails going down.

The Keeper

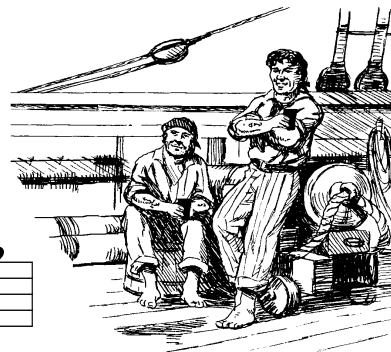
Four staves of musical notation in G major (one sharp) and 4/4 time. The first staff begins with a treble clef, a key signature of one sharp (F#), and a 4/4 time signature. The melody consists of quarter and eighth notes. The second staff is labeled 'Chorus' and features a mix of eighth and quarter notes. The third and fourth staves continue the melody with eighth and quarter notes, ending with a half note and a quarter rest.

Lewis Bridal Song



Three staves of musical notation in G major (one sharp) and 4/4 time. The first staff is labeled 'Chorus' and begins with a treble clef, a key signature of one sharp (F#), and a 4/4 time signature. The melody consists of quarter and eighth notes. The second staff is labeled 'Fine Verse' and continues the melody with quarter and eighth notes. The third staff is labeled 'D.C.' and concludes the piece with quarter and eighth notes, ending with a half note and a quarter rest.

Turn the Glasses Over



Musical notation for 'Turn the Glasses Over' in 4/4 time, key of D major (F#, C#, G#). The piece consists of three staves of music.

The Riddle Song: I Gave my Love a Cherry

Musical notation for 'The Riddle Song: I Gave my Love a Cherry' in 4/4 time, key of D major (F#, C#, G#). The piece consists of two staves of music.

Zum Gali Gali

Musical notation for 'Zum Gali Gali' in 4/4 time, key of D major (F#, C#, G#). The piece consists of three staves of music. The third staff is labeled 'Chorus'.

The chorus of Zum Gali Gali can be played as an introduction and then throughout the piece as a second part.

Coulter's Candy

Musical notation for 'Coulter's Candy' in G major (one sharp) and 4/4 time. It consists of two staves. The first staff begins with a treble clef, a key signature of one sharp (F#), and a 4/4 time signature. The melody consists of quarter and eighth notes. The second staff continues the melody and ends with a double bar line.

The British Grenadiers

Musical notation for 'The British Grenadiers' in G major (one sharp) and 4/4 time. It consists of three staves. The first staff begins with a treble clef, a key signature of one sharp (F#), and a 4/4 time signature. The melody is a lively march featuring eighth and sixteenth notes. The second and third staves continue the melody, with the third staff ending with a double bar line.

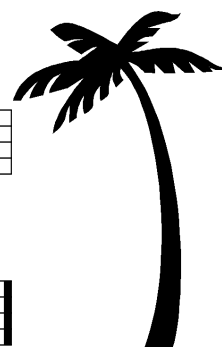
Mango Walk

Chorus

Musical notation for the Chorus of 'Mango Walk' in G major (one sharp) and 4/4 time. It consists of two staves. The first staff begins with a treble clef, a key signature of one sharp (F#), and a 4/4 time signature. The melody is a rhythmic march. The second staff continues the melody and ends with a double bar line.

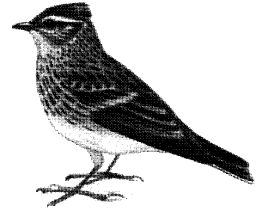
Verse

Musical notation for the Verse of 'Mango Walk' in G major (one sharp) and 4/4 time. It consists of two staves. The first staff begins with a treble clef, a key signature of one sharp (F#), and a 4/4 time signature. The melody is a rhythmic march. The second staff continues the melody and ends with a double bar line.



Mango Walk may be performed in two parts, one starting with the chorus, the other at line three with the verse.

Alouette (the Lark)



Musical score for 'Alouette (the Lark)' in treble clef, key of D major (F#, C#, G#), and 4/4 time. The score consists of three staves of music. The first staff begins with a treble clef, a key signature of three sharps, and a 4/4 time signature. The melody is characterized by eighth and sixteenth notes, often beamed together in groups. The second and third staves continue the melodic line, with some notes marked with slurs and accents.

Land of the Silver Birch

Musical score for 'Land of the Silver Birch' in treble clef, key of D major (F#, C#, G#), and 4/4 time. The score consists of three staves of music. The first staff begins with a treble clef, a key signature of three sharps, and a 4/4 time signature. The melody features a mix of eighth and sixteenth notes, with some notes beamed together. The second and third staves continue the melodic line, with some notes marked with slurs and accents.

Amazing Grace

Musical score for 'Amazing Grace' in treble clef, key of D major (F#, C#, G#), and 3/4 time. The score consists of three staves of music. The first staff begins with a treble clef, a key signature of two sharps, and a 3/4 time signature. The melody is characterized by quarter and eighth notes, with some notes beamed together. The second and third staves continue the melodic line, with some notes marked with slurs and accents, and some notes marked with a '3' indicating a triplet.

My Grandfather's Clock

Musical score for 'My Grandfather's Clock' in G major (one sharp) and 4/4 time. The score consists of four staves. The first staff begins with a repeat sign and contains two first endings, labeled '1' and '2'. The second and third staves contain the main melody with a triplet of eighth notes marked '3'. The fourth staff continues the melody with another triplet marked '3'.



Ye Banks and Braes

A Traditional Scottish Tune

Musical score for 'Ye Banks and Braes' in G major (one sharp) and 3/4 time. The score consists of three staves. The first staff begins with a repeat sign. The second staff contains two first endings, labeled '1' and '2 and 3', with the word 'Fine' written above the second ending. The third staff continues the melody and ends with the instruction 'D.S. al Fine'.

The Ash Grove

A Traditional Welsh Tune

Musical score for 'The Ash Grove' in G major (one sharp) and 3/4 time. The score consists of three staves. The first staff begins with a repeat sign. The second staff contains two first endings, labeled '1' and '2 and 3', with the word 'Fine' written above the second ending. The third staff continues the melody and ends with the instruction 'D.S. al Fine'.

The Cuckoo

An Austrian folk-song

Musical notation for 'The Cuckoo' in G major (one sharp) and 3/4 time. It consists of three staves. The first two staves are the main melody. The third staff contains a repeat sign with two endings: ending 1 leads back to the beginning, and ending 2 concludes with a whole note G.

- a good three-part round

Baby Sardine

Music by P. Wooding / J. Wild

Musical notation for 'Baby Sardine' in G major (one sharp) and 6/8 time. It is a three-part round with three parts labeled A, B, and C. Part A starts with a treble clef and a 6/8 time signature. Part B starts with a treble clef. Part C starts with a treble clef and a 7/8 time signature.

What Shall We Do with the Drunken Sailor?



Musical notation for 'What Shall We Do with the Drunken Sailor?' in G major (one sharp) and 2/4 time. It consists of four staves of music.

My Aunt Jane

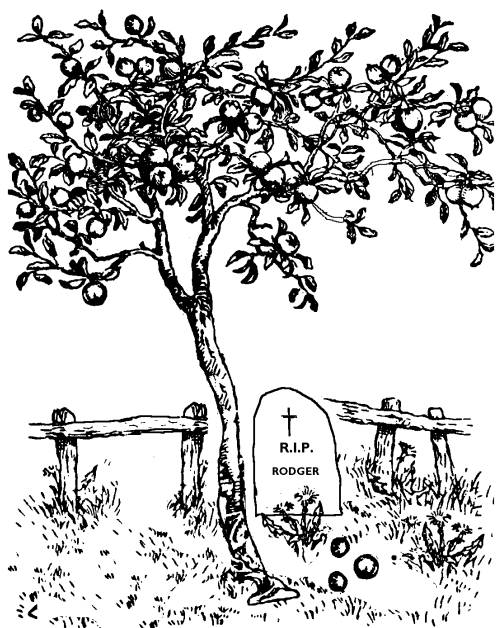
- A Traditional Irish Tune



All Night, All Day



Old Rodger is Dead



Soldier, Soldier, Won't You Marry Me?

page 9



Musical notation for "Soldier, Soldier, Won't You Marry Me?". The piece is written on four staves in treble clef with a key signature of two sharps (F# and C#). The first staff ends with a double bar line and a repeat sign. The second staff ends with a double bar line and the word "Fine". The third staff ends with a double bar line and the instruction "D.C. al Fine". The fourth staff ends with a double bar line and a repeat sign.

Andulko (Little Angel)

A Czech folk-song

Musical notation for "Andulko (Little Angel)". The piece is written on three staves in treble clef with a key signature of three sharps (F#, C#, G#) and a 3/4 time signature. The first staff ends with a double bar line and a repeat sign. The second and third staves end with double bar lines.

Paul's Little Hen

A Scandinavian folk-song

Musical notation for "Paul's Little Hen". The piece is written on three staves in treble clef with a key signature of two sharps (F# and C#) and a 2/4 time signature. The first staff ends with a double bar line and a repeat sign. The second and third staves end with double bar lines.

The Soldier's Song - Schumann

R. Schumann

Musical score for 'The Soldier's Song' by Robert Schumann. The score consists of four staves of music in G major (three sharps) and 4/4 time. The melody is characterized by a rhythmic pattern of eighth and sixteenth notes, with a steady, marching-like quality.

Silent Worship

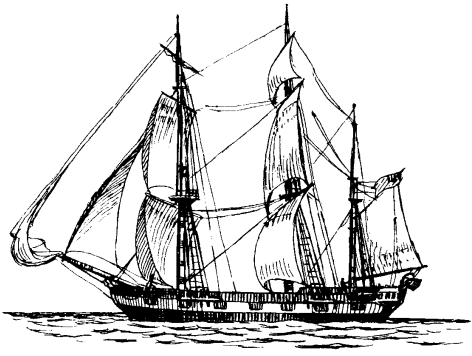
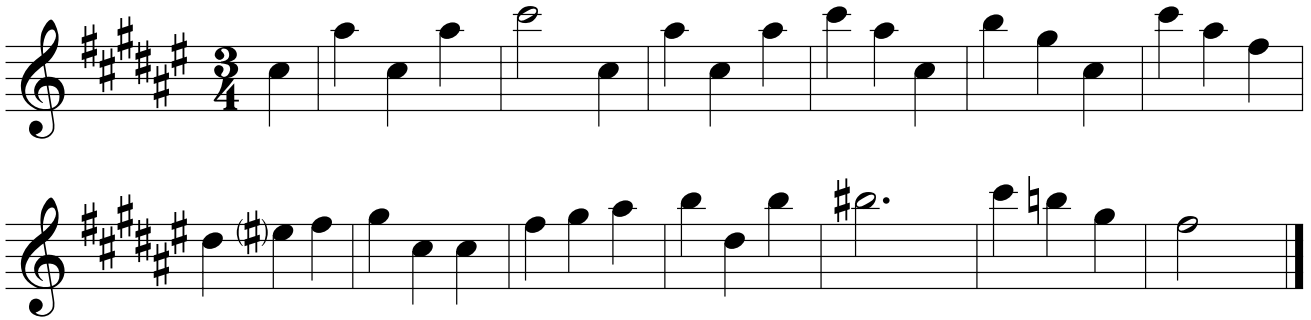
G. F. Handel

Musical score for 'Silent Worship' by George Frideric Handel. The score consists of four staves of music in G major (three sharps) and 4/4 time. The melody is characterized by a rhythmic pattern of eighth and sixteenth notes, with a steady, marching-like quality. The score includes a 'Fine' marking and a 'D.C. al Fine' instruction.



The Blacksmith - Brahms

page 11
J. Brahms



Blow the Wind Southerly



Acknowledgements

The words of ANDULKO THE GOOSE GIRL by Kerry Milan with acknowledgements to Roger Fiske.

The words of BABY SARDINE by Kerry Milan with acknowledgements to Spike Milligan.

The music for BABY SARDINE by P. Wooding and J. Wild: © Sing for Pleasure, 25 Fryerning Lane, Ingatestone, Essex. CM4 0DD

The percussion / piano accompaniments are by Kerry Milan, except Handel's "Silent Worship" and Schumann's "The Soldier's Song". The accompaniment to Brahms' "The Blacksmith" is a simplified arrangement of the original piano part. (A still easier version appears in the Oxford School Music Books.)

If other people's copyright has inadvertently been infringed credit will be given in any further publication.

Contents

2	Water Come a Me Eye
2	Lewis Bridal Song
2	The Keeper
3	The Riddle Song: I Gave my Love a Cherry
3	Zum Gali Gali
3	Turn the Glasses Over
4	Coulter's Candy
4	The British Grenadiers
4	Mango Walk
5	Alouette (the Lark)
5	Land of the Silver Birch
5	Amazing Grace
6	My Grandfather's Clock
6	Ye Banks and Braes
6	The Ash Grove
7	The Cuckoo
7	Baby Sardine
7	What Shall We Do with the Drunken Sailor?
8	My Aunt Jane
8	All Night, All Day
8	Old Rodger is Dead
9	Soldier, Soldier, Won't You Marry Me?
9	Andulko (Little Angel)
9	Paul's Little Hen
10	The Soldier's Song - Schumann
10	Silent Worship
11	The Blacksmith - Brahms
11	Blow the Wind Southerly
11	Acknowledgements